

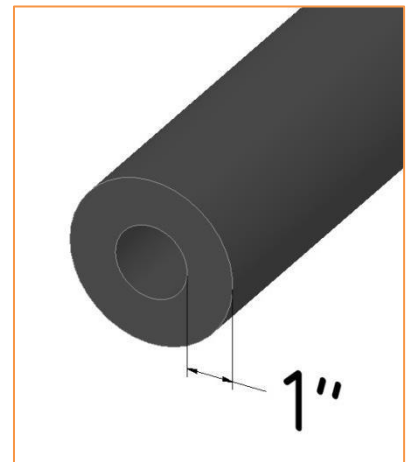
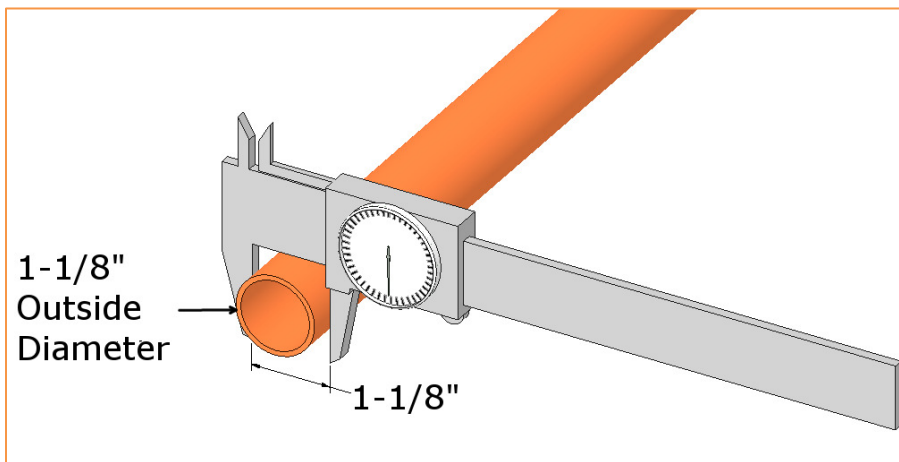


## 8 Series Insulated Coupling System

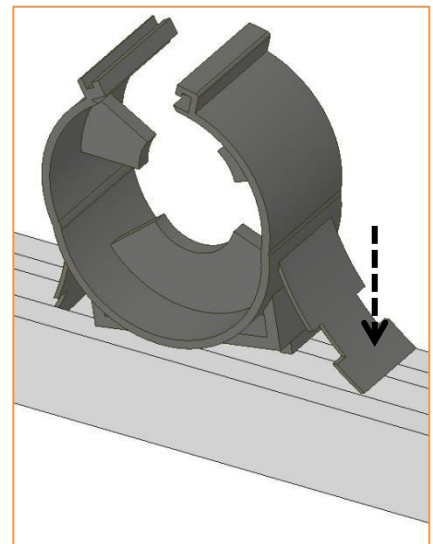
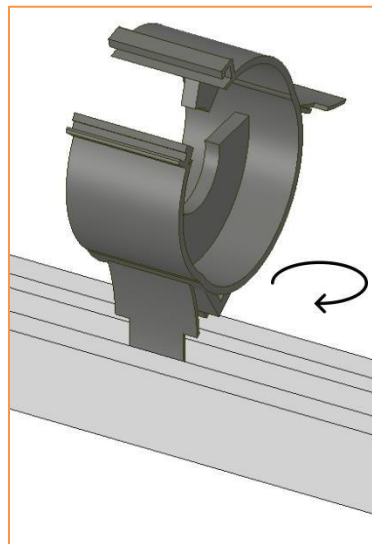
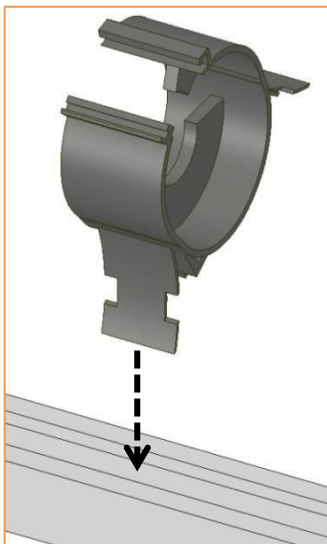


### INSTALLATION GUIDE FOR INSULATED TUBE CLAMPING.

1. Determine correct size of copper tube (outside diameter).



2. Place the Klo-Shure coupling into channel, leg first, rotating ninety degrees. Press down on the other leg to snap it into place within the channel.



Find us online: [www.hydra-zorb.com](http://www.hydra-zorb.com)

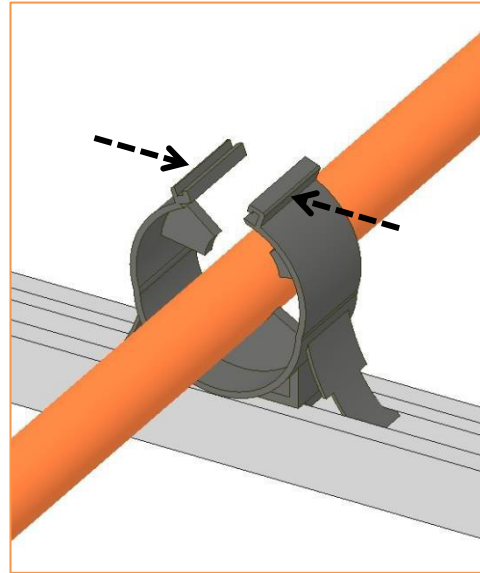
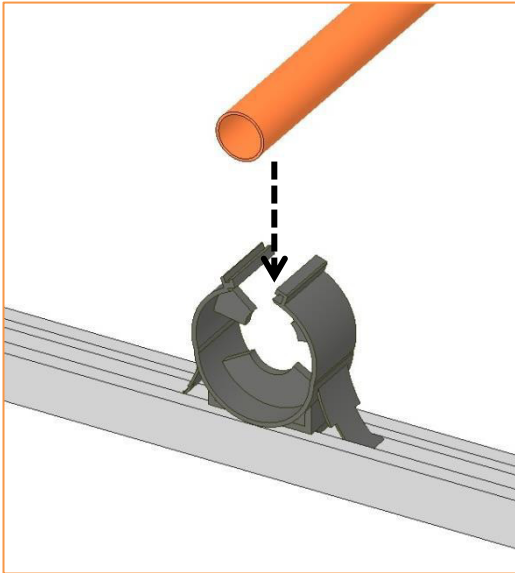


(248) 373-5151

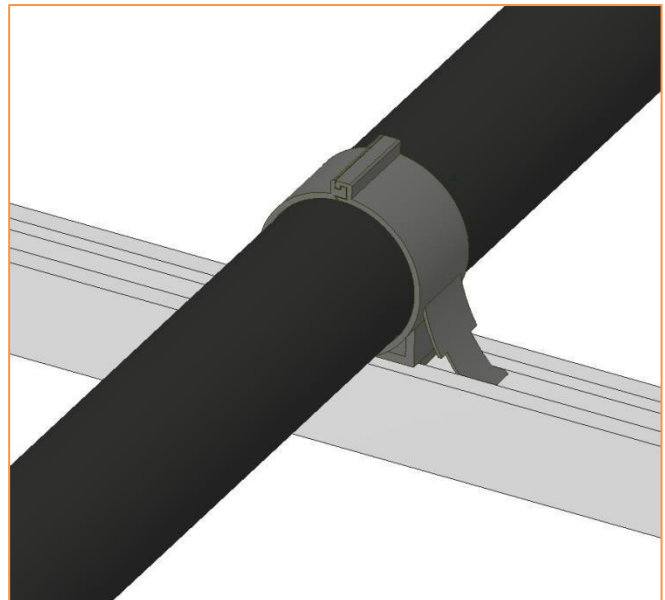
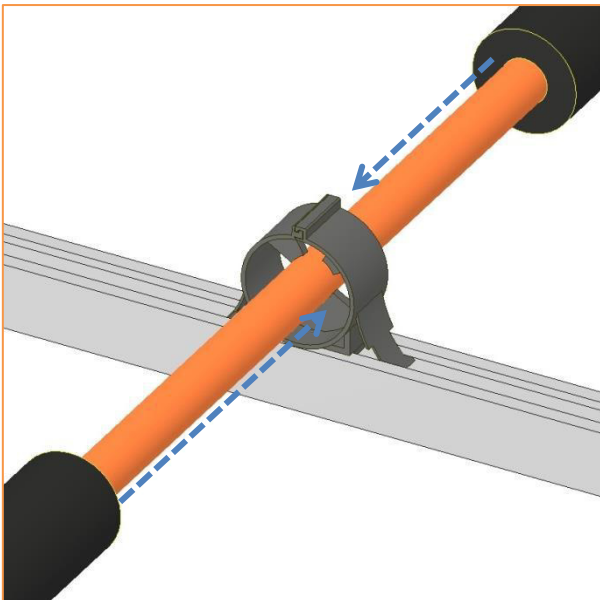
1751 Summit Drive – Auburn Hills, Michigan 48326



3. Place copper tubing into open Klo-Shure coupling, and squeeze the top of the coupling together to snap closed and secure tubing.



4. Slide elastomeric insulation over tubing ends and insert into Klo-Shure coupling pockets on both sides up to internal wall (MFG approved insulation adhesive on the ends of insulation is optional to further secure).



Find us online: [www.hydra-zorb.com](http://www.hydra-zorb.com)



(248) 373-5151

1751 Summit Drive – Auburn Hills, Michigan 48326

