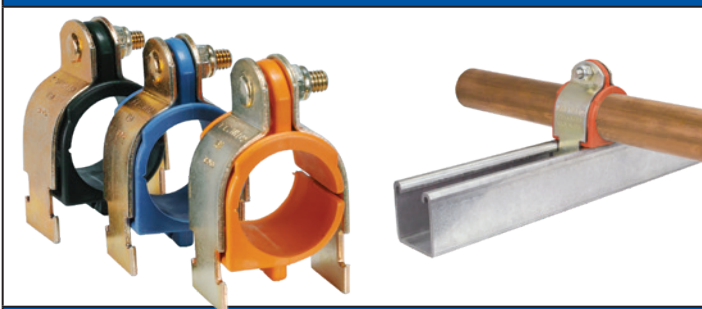




METAL FRAMING

COMPLETE LINE OF SUPPORTS & COMPONENTS

CUSH-A-NATOR®



- Standard Temp. Range -50°F to 275°F
- High Temp. Range -65°F to 340°F
- High Intensity Temp. Range -65°F to 400°F
- Fastest for Installation and Rework
- Best product for RetroFit
- Cushion Rotates into Place on Existing Pipe

CUSH-A-BLOCK®



- 75% Faster Strut Install
- Water Flow-through Channels
- Molded-in Visibility Strips
- Easy-grip Embedded Handles
- 100% Recycled Material - LEED Qualified
- Resistant to Freeze and Thaw

CUSH-A-THERM™



- Prevents Condensation Leaks:
Saves Ceilings, Walls, Supports
- No Air Gaps, No Energy Transfer
- Maintains Thermal Vapor Barrier
- Self-Extinguishing - ASTM D 635
- Service Temperature, Continuous:
-328°F to +257°F

SNAP-A-SADDLE PRO™



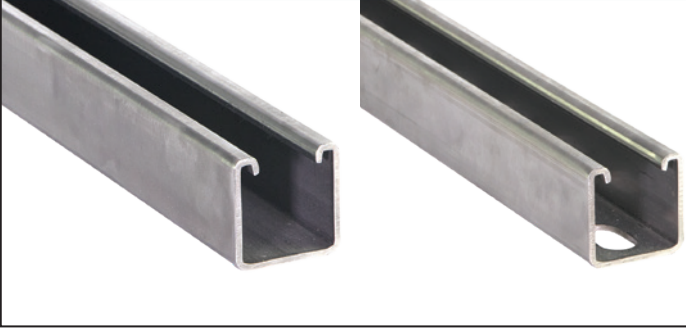
- Prevent Moisture and Mold Damage
- Eliminate Risk of Falling Insulation Supports
- Allow Expansion/Contraction Movements
- Prevents Insulation Tears
- Interior and Exterior Applications
- Keeps Thermal Bridge Intact

Wesanco-ZSi.com | 800-323-7053

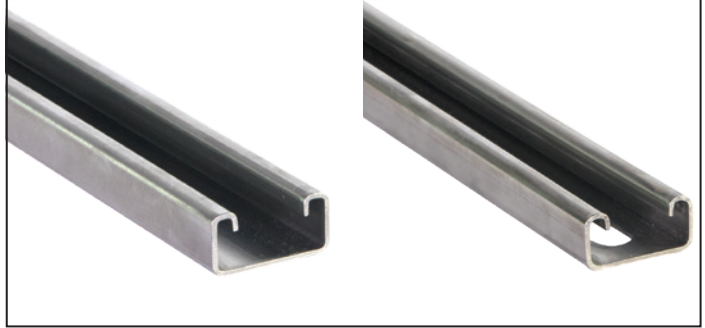
ZSi & Wesanco are part of the Ideal Tridon Group. Learn more at idealtridongroup.com



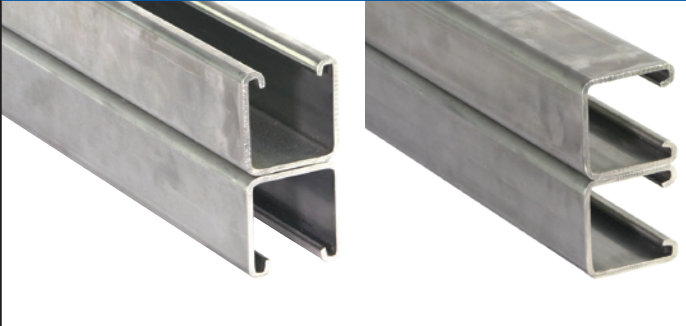
W200 & W200SS: $1\frac{5}{8}" \times 1\frac{5}{8}"$ (41mm x 41mm)



W500 & W500SS: $1\frac{5}{8}" \times 1\frac{3}{16}"$ (41mm x 21mm)



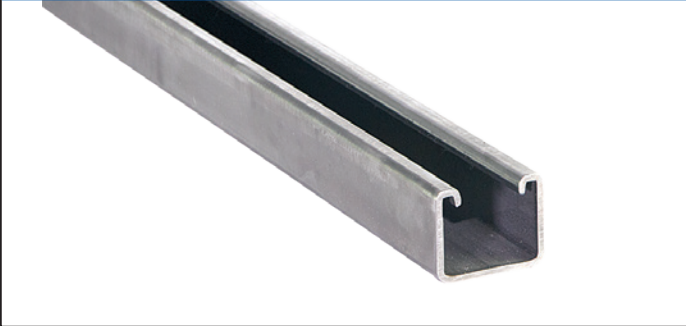
W201 & W202: $1\frac{5}{8}" \times 3\frac{1}{4}"$ (41mm x 83mm)



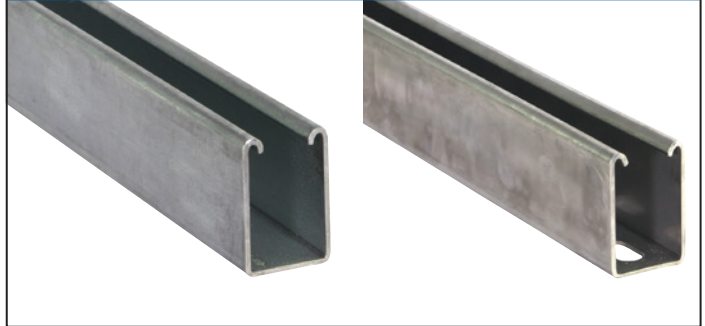
W501: $1\frac{5}{8}" \times 1\frac{5}{8}"$ (41mm x 41mm)



W800: $1\frac{5}{8}" \times 1"$ (41mm x 25mm)



W100 & W100SS: $1\frac{5}{8}" \times 2\frac{7}{16}"$ (41mm x 62mm)



W900 & W900SS: $1\frac{5}{8}" \times \frac{7}{8}"$ (41mm x 23mm)



W150 & W150SS: $1\frac{5}{8}" \times 3\frac{1}{4}"$ (41mm x 83mm)

