



INSULATED TUBING & PIPE SUPPORTS

HVAC REFRIGERATION COMPONENTS

CUSH-A-NATOR®



The **Cush-A-Nator®** cushion is manufactured in the United States and made from a new incredibly durable thermoplastic rubber that resists high heat and provides longer life against vibration fatigue. The Cush-A-Nator® is made from a proprietary thermoplastic vulcanized material cross-linked with high performance rubber and thermoplastic elastomers, which

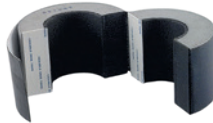
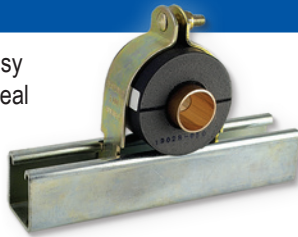
produces the highest operating temperature range in the industry.

		
-50°F to 275°F (-45°C to 135°C)	-65°F to 340°F (-53°C to 170°C)	-65°F to 400°F (-53°C to 204°C)
(CN) Standard	(HT) High Temp	(HIT) High Intensity Temp

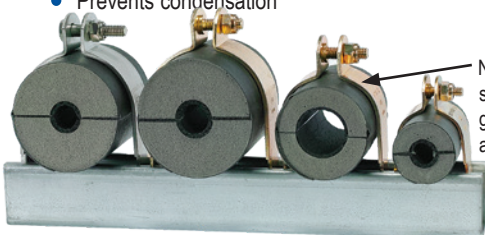
CUSH-A-THERM™

The **Cush-A-Therm™** Clamp is a fast easy way to provide a crush-resistant airtight seal for chilled refrigeration or mechanical pipe-lines that require continuous insulation. The rigid foam construction has an insulating tape inner lining which supports tube and absorbs vibration of operating pipelines. The outer cover's special rubber coating seals the cushion completely after installation in order to prevent condensation.

- Temperature range: -70°F to +250°F
- Maintains thermal barrier protection
- Prevents condensation



NOTE: Complete assembly supplied with gold electro-galvanized channel clamp and hardware



CUSH-A-CLAMP®



Cush-A-Clamp® – Channel mounted clamping systems are ideal for multiple line runs, while absorbing shock and vibration, reducing unwanted noise and preventing galvanic corrosion. Cush-A-

Clamp® fits any standard 1-5/8" channel. Steel clamps for tube sizes up to 1-3/8" have the "**Controlled Squeeze™**" design which eliminates over-tightening.

KLO-SHURE®

Patented Klo-Shure® Insulation Couplings allow sections of closed-cell, elastomeric or fiberglass insulation to be secured, eliminating most secondary operations at suspension points. It can also be used to simply join and secure two lengths of insulation.



- All insulated copper tube and iron pipe lines are to be secured using can be insulated and secured
- Insulation is inserted inside coupling until it contacts internal wall
- Acceptable for horizontal and vertical installations
- UL Classified 2043 (25/50) for use in plenums and air handling systems
- Specified MSS-SP 58 Type 60 and Type 61

BRONCO II®

Bronco II® Saddle for Insulation Tube & Pipe



- Universal mounting feature allows secure fit on either side of channel
- Available in both black & white
- UL Classified 2043 (25/50) for use in plenums and air handling systems
- Made in USA
- Easy Installation
- Manufactured from high-strength Polypropylene Copolymer

Wesanco-ZSi.com | 800-323-7053

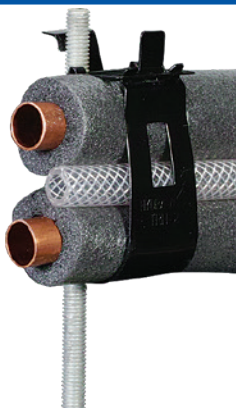
ZSi & Wesanco are part of the Ideal Tridon Group. Learn more at idealtridongroup.com



Insulated Tubing & Pipe Supports

TRH HANGER SYSTEM

Supports cable runs or a pair of insulated flow and return refrigerant lines on $\frac{1}{4}$ " to $\frac{3}{8}$ " threaded rod. Simply fold the lock-tab over to secure the lines into the strap. The spring steel hanger grips the rod tightly, and the black zinc coating offers corrosion resistance while matching the insulation color. The clamp can be detached from the rod hanger and used to secure lines to flat surfaces.



- Quick to Install or Adjustment
- Spring steel hanger grips rod tightly
- Rolled steel edges for safe cable runs
- Black color to match pipe insulation

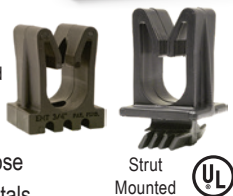
CUSH-A-CLAW™

The **Cush-A-Claw™** Grasps your Tube, Pipe, or Hose and holds it in place. The unique one piece patent pending design allows for quick, and simple installation. It will not rust because it's molded from the same TPE Material of some that you've come to know and trust.



- Temp Range: -50° to 275° F
- Non Conducting, Will not Rust
- Sure Grip Base easily rotates into strut
- Easy Snap-in Installation of Tube, Pipe, or Hose
- Prevents Galvanic Corrosion of Dissimilar Metals

Surface Mounted



Strut Mounted

SPECIALTY CHANNEL NUTS

Properly Secures Strut Fittings

- Increased Efficiency
- Nut Stays in Place During Install Without Use of Spring
- No Springs Slipping Through Slots



SADDLE-UP

The **Saddle-Up** Pipe Insulation Saddle is a formed metal shield designed to allow insulated refrigeration pipe or tubing to pass through the support without need to compromise the vapor barrier and protects from crushing or damage at hanger and support locations.



OMEGA SERIES™

Omega Series™ – The clamp assembly retains, guides, protects line runs. Attached with two fasteners to any flat surface, the clamp eliminates the use of special channels, providing a savings in both space & cost.



- Interlock edge ensures it remains in place.

		
-50°F to 275°F (-45°C to 135°C)	-65°F to 340°F (-53°C to 170°C)	-65°F to 400°F (-53°C to 204°C)
(CN) Standard	(HT) High Temp	(HIT) High Intensity Temp

BEAM CLAMPS

Wide Mouth Malleable Iron Universal Beam Clamps

- Setscrew and locknut included
- Maximum flange thickness of 1- $\frac{1}{16}$ "



METAL FRAMING – CUT STRUT & FITTINGS – DOMESTIC ROLLED CHANNEL IN-STOCK



- Cut Strut Size Range: 6" thru 96" in 6" Increments, Standard Strut Lengths: 10' and 20'
- Solid Single or Combination Strut, Available with Pierced with Holes, Slots, Long Slots, or Knockouts
- 100% Adjustable, 100% Reusable, No Drilling, No Special Tools
- Wide Range of Materials and Finishes including Stainless Steel
- Vast Assortment of Fittings and Accessories to Complete Every Project

HVAC Refrigeration Components

Insulated Tubing & Pipe Supports



AIRSTRIP™ INSULATION



The **AIRSTRIP™** is designed to dampen the noise and vibration that can occur between piping or duct work and the supporting channel. Made from 64

Durometer Santoprene, the AIRSTRIP™ is light weight, dependable, and long-lasting.



CUSH-A-STRIP™ INSULATION



Cush-A-Strip™ is manufactured from a thermoplastic elastomer. Packaged in 20 foot rolls in an E-Z dispenser box for convenience in handling and storage. The special locking lip edges ensure that Cush-A-Strip™ will remain in place with a balanced grip.

CUSH-A-CLICK

The **Cush-A-Click** is ideal for the installation of refrigeration systems allowing the barrier seal to run the length of the pipe work without cutting the insulation material. It helps retain an unbroken vapor barrier seal, eliminating the problem of sweating on metal fittings.



CUSH-A-CLIP™

The **Cush-A-Clip™** is a simple, economical, lightweight hanger for supporting tubing. The one piece design makes installation a snap with no nuts to tighten or parts to lose. Secure but non-tightening design allows for expansion, greatly reducing joint fractures



CUSH-A-GRIP

Multi-size adjustment capability allows four clamp sizes to fit fifteen sizes of tube and pipe. Comes with stainless steel bolt and captured nylon lock nut. It is multi-environmental and maintains thermal barrier.



- Temperature range: -40°F to +380°F
- No galvanic reaction, Will not rust, permissible outdoors

QUICK-CLIP

Quick-Clip's unique one-piece, strong and lightweight composite polyamide alloy design is tested from -40°F to +275°F. The clip can be installed single-handedly, for fast, easy installation that saves time and money. It will overcome the problems of using cable ties for piping, electrical, optical and network cabling.



ALPHA SERIES™

Alpha Series™ – Designed for the tough jobs, the U-Bolt Assembly secures pipe runs to any flat surface. The cushion designed provides total load distribution, allowing the U-Bolt to become a full contact hanger, eliminating knife-edge loading. The U-Bolt traps and secures the cushion in place to prevent lateral movement, while nylon insert locknuts provide a positive lock.



-50°F to 275°F (-45°C to 135°C) (CN) Standard	-65°F to 340°F (-53°C to 170°C) (HT) High Temp	-65°F to 400°F (-53°C to 204°C) (HIT) High Intensity Temp

CUSH-A-GLIDE

The **Cush-A-Glide** is designed for fast installation of copper tube or pipe. Just spread the clamp apart placing over tube or pipe and fasten one side. Push in the opposite side to the desired tightness, allowing for expansion and contraction, then fasten the other side.



- Size range of 1/4" up to 2-1/8" O.D.
- Temp. range: -50°F to 275°F
- Prevents galvanic corrosion

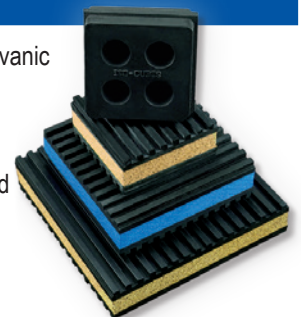
CUSH-A-RING

The **Cush-A-Ring** is a unique rubber lined hanger for copper and steel tube or pipe. The 2-1/2" thru 4" sizes are a two-part clamp that has a hinged side with a single screw patented locking system. The quick locking system is easy to close which makes it faster for installation. The noise insulating rubber lining is made of UV-resistant EPDM rubber. The Cush-A-Ring is zinc plated for corrosion resistance.



GAMMA PADS

The effects of vibration, shock, surge, galvanic corrosion and unwanted noise are a major concern. Improperly cushioned equipment, pipe, tube, or hose invites failure and potential problems. Cushioned clamping and vibration isolation products from ZSI provide the proper solutions to combat these effects.



CUSH-A-BLOCK ROOFTOP SUPPORT SYSTEMS



The CBN Series is UV resistant and suitable for installation on most types of roofing material or other flat surfaces. Can be used as a curb (sleeper) replacement. Screw fasteners can be used to attach one or two hole pipe straps or a piece of strut. Standard strut mount pipe clamps are used to secure the pipes. The CBN Series provides a longer mounting surface with strut lengths up to 46.82".

- 100% Recycled Rubber
- Qualifies for LEED Credits
- Meets the Buy America Act and American Reinvestment Recovery Act (A.R.R.A.)
- Resistance to Freeze and Thaw
- Reflective Eco-Green Stripes for Easy Visibility
- Dampens Vibrations
- Compatible With Most Rooftop Materials
- Easy to Change Strut
- Strut is Available in Corrosion Resistant Stainless Steel and Aluminum

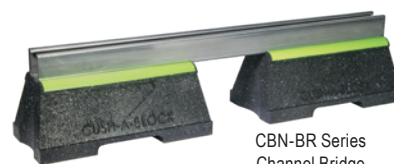
Cush-A-Block Support Applications:

- Solar Racking
- Pipe & Conduit supports
- HVAC, Duct, Cable Tray supports
- Air Conditioning supports
- Roof Walkway supports

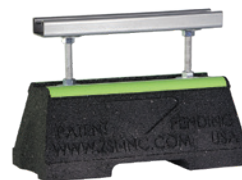
Channel for Cush-A-Block support assemblies can be made in special lengths, finishes, and alloys including Aluminum, 304 & 316 Stainless Steel, PVC or Powder coated, Zinc Trivalent Chromium, Pre-Galvanized and Hot Dipped Galvanized.



CBN-DS &
DSFW Series
Adjustable and Fixed
Width Duct Supports



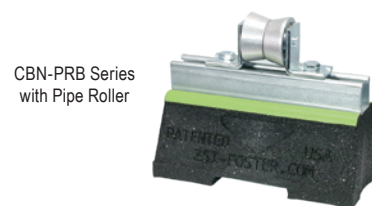
CBN-BR Series
Channel Bridge



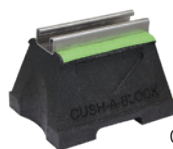
CBN-CE Series
Raised Channel



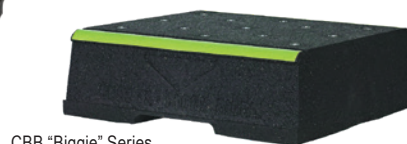
CBN-RB Series
Bridge Medium &
Heavy Duty Support



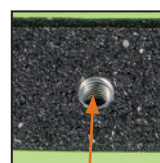
CBN-PRB Series
with Pipe Roller



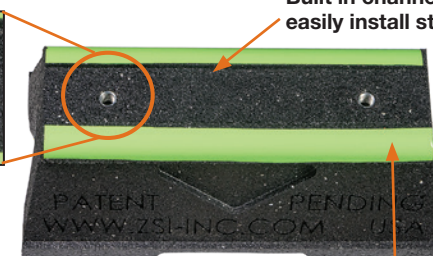
CBM "Mini" Series



CBB "Biggie" Series



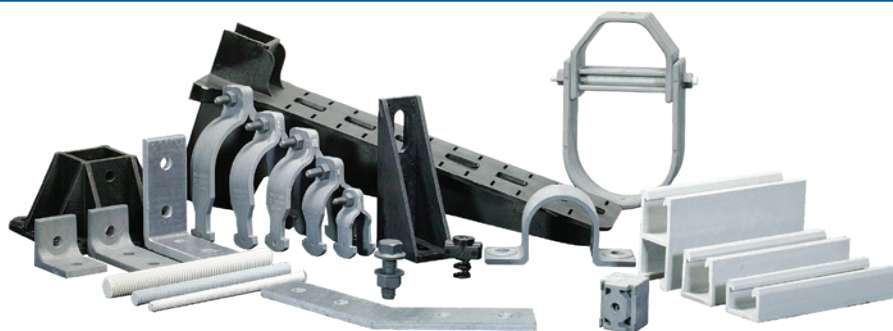
Embedded fastener reduces time to install or change strut. Use $\frac{3}{8}$ " x $\frac{1}{4}$ " bolts



Built in channel guide to easily install strut straight.

Eco-Green Reflective Safety Strip is molded into the block, and will not flake or peel.

FIBERGLASS FRAMING SYSTEM



- Durability for Corrosion Resistance in Challenging Environments
- Light Weight & Fire retardant
- Interchangeable with Industry Standard Channel Systems
- Complete line of corrosion-resistant fiberglass components